

| | Severity of Consequences | | | | |
|-------------------------------------------|--------------------------|-----------------------|-------------------|-----------------|--------------------|
| Likelihood of Occurance | 1. Minor Injuries | 2. Significant Injury | 3. Serious Injury | 4. Major Injury | 5. Fatality |
| 1. Very unlikely (hasn't happened before) | 1 | 2 | 3 | 4 | 5 |
| 2. Slight (rarely occurs) | 2 | 4 | 6 | 8 | 10 |
| 3. Feasible (possible but not common) | 3 | 6 | 9 | 12 | 15 |
| 4. Likely (has before will again) | 4 | 8 | 12 | 16 | 20 |
| 5. Very Likely (occurs frequently) | 5 | 10 | 15 | 20 | 25 |
| Risk Rating: Likelihood * Severity | Minimal 1 - 2 | Low 3 - 9 | Medium 10 - 15 | High 16 - 20 | Extreme 21 - 25 |

Risk assessment form for activities and hazards at Gilgal Church.

| | |
|--------------------|---------------------------------------|
| Location | Park Avenue |
| Hazard / Activity | Protection against Covid-19 infection |
| Date of Assessment | 15 June 2020 |
| Name of Assessor | Richard Newman |
| Date of review | July 2020 |

Key

L – Likelihood of Occurrence

S – Severity of Occurrence

R – Risk Rating $R=L \times S$

| Hazard / Activity | Harm | Persons affected | L | S | R | Existing Controls | Further action. To be decided in relation to Risk rating (see Severity table above) | Date to be achieved | Ref No: | Review date |
|--------------------------------------------------------------|------------------------------------------------------------------------------------------------------------------|------------------|---|---|----|-------------------|-------------------------------------------------------------------------------------------------------------------------------------------------------------------------------------------------------------------------------------------------------------------------------------------------------------------------------------------------------------------------------------------------|--------------------------------|---------|------------------------------------------------|
| Church services | Covid-19 infection | Congregation | | | | None | To cordon off ever other pew | 15 June 2020 | 1 | July 2020 or when Government guidance changes. |
| continued | | | | | | | To ensure signage is in place clearly indicating entry and exit routes | | 2 | |
| Potential, due to none use of water systems during lockdown. | <p>For the purposes of this assessment, the highest rate of 25 has been presumed</p> <p>Legionella infection</p> | | | | 25 | None | <p>Hand cleanser at entry point with congregant present to take names and ensure each person is informed of routes and uses the provided cleansing products.</p> <p>Steps have been taken to cordon off portions of each accessible pew to ensure correct social distancing is established</p> <p>To ensure water systems are run / flushed at least once a month (Guidance from DWR Cymru)</p> | | 3 | |
| | | | | | 25 | None | | To continue or a regular basis | N/A | To follow professional guidance. |

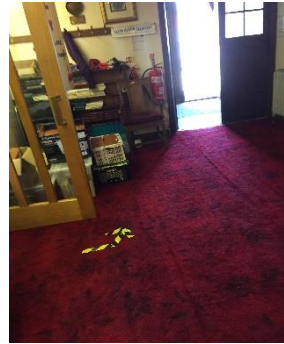
JUSTIFICATION SHEET – To give reasons for decisions.



Ref No: 1



Ref No: 2



Ref No:3



Ref No: 4

It is most important to ensure that all congregants take these actions: Upon entry, get signed in, use hand sanitiser AT THE DESK, accept a 'wet wipe' and use it to clean their chosen seating place by wiping the hand rail on the pew immediately in front of them as well as the actual seat, remove the wipe to a bin upon leaving and use hand sanitiser before leaving the building.